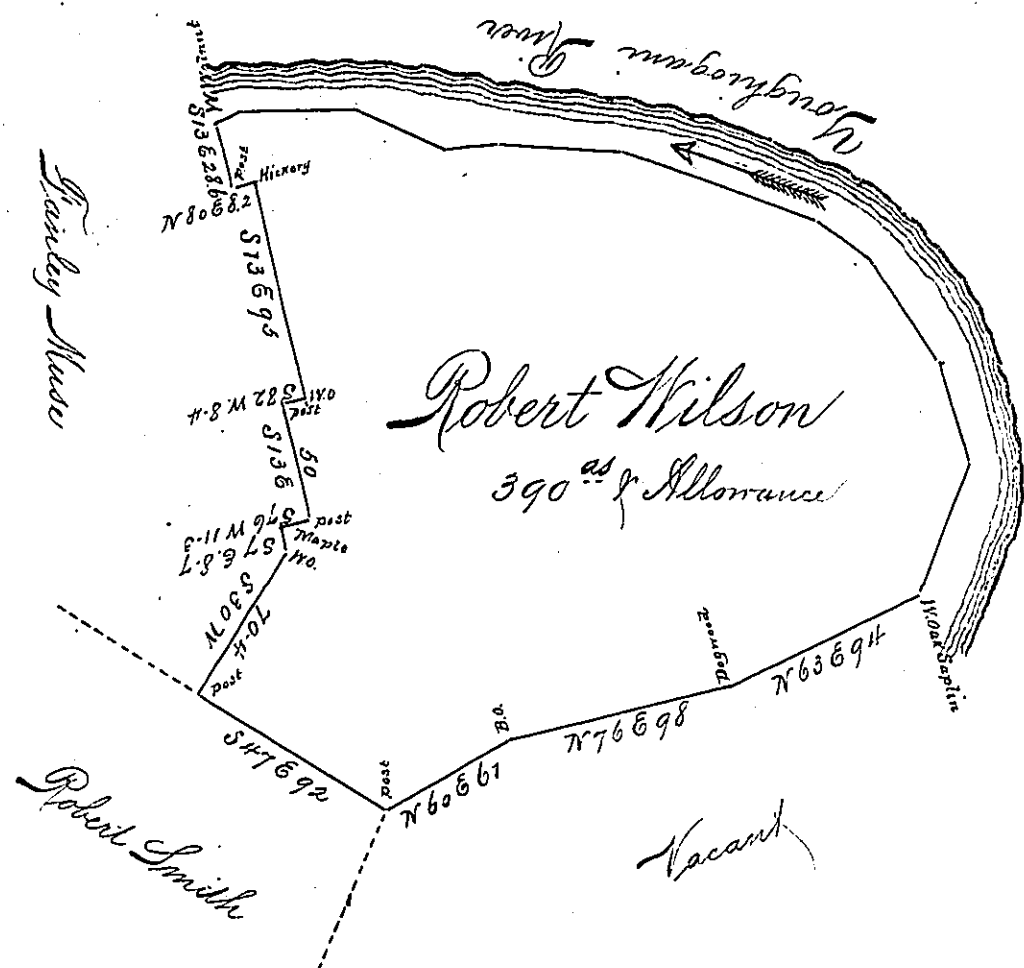


P-13-348

913



Courses & Distances from a White Oak Corner to a W Walnut

N 21 E 61
N 20 W 42
N 33 W 53.2
N 55 W 32.5
N 71 1/2 W 90
N 87 W 54.5
S 86 W 22.6
N 68 W 40.8
N 89 W 50
S 72 W 8 to the W Walnut
454.6

Situated on the South Side of Youghiogani River, about three Miles above the Confluence in Rastraver Township, Westmoreland County and Surveyed the 30th day of November 1785 In Pursuance of a Warrant Dated the 24th Day of August 1785.

p^o Alexander W. Clean Depy

To John Lukens Esquire }
Surveyor General

IN TESTIMONY that the above is a copy of the original remaining on file in the Department of Internal Affairs of Pennsylvania, made conformably to an Act of Assembly approved the 16th day of February, 1833. I have hereunto set my Hand and caused the Seal of said Department to be affixed at Harrisburg, this

third day of September 1895.

James W. Fatta
Secretary of Internal Affairs.